

GRAIN CORN

LOCAL EXPERIENCE





James's field: 38ac chiselled alfalfa field

Fertility: Manure 6,000gal fall + 4,000gal spring

Planting: May 14, excellent conditions
Dekalb 24-60 @ 38,000 population
Starter 175lbs 50-50 urea-MAP

Frank's fields: 60 acres, soybeans previous year
1 pass of vertical tillage in the spring



Fertility: Broadcast 350lbs/ac of 26-0-26
Starter 200lbs/ac 15.7-27.5-0-11.32S
Totals: N 122, P 55, K 91, S 22.6

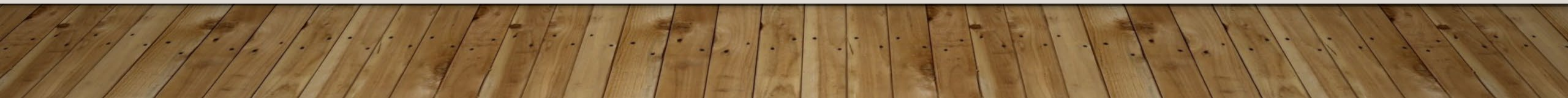
Planting: May 13, excellent conditions
Dekalb 24-60 and 24-06
@ 36,000 population



HERBICIDE PROGRAM

Frank: Round up+Armezon Pro+ Aatrex May 15
Only products applied field stayed clean all year

James: Aatrex + Armezon Pro May 17
(extremely dry, needs moisture to activate)
- volunteer alfalfa plus other minor weeds
Glyphosate June 4





Cost of production Frank: 2021			
INPUTS/AC: FERTILIZER	132\$		
SEEDS	135\$		
HERBICIDE	35\$		
DRYING AVG 26%	23\$		
TOTAL	325\$		
REVENUE/AC 320\$/tone	4.33t/ac 1385\$	3.25t 1040\$	2.5t/ac 800
NET PROFIT/AC	1060\$	715\$	475\$

HISTORICAL YIELD AVERAGE WAS AROUND 2.75-3 TONE/AC





Cost of production James:	

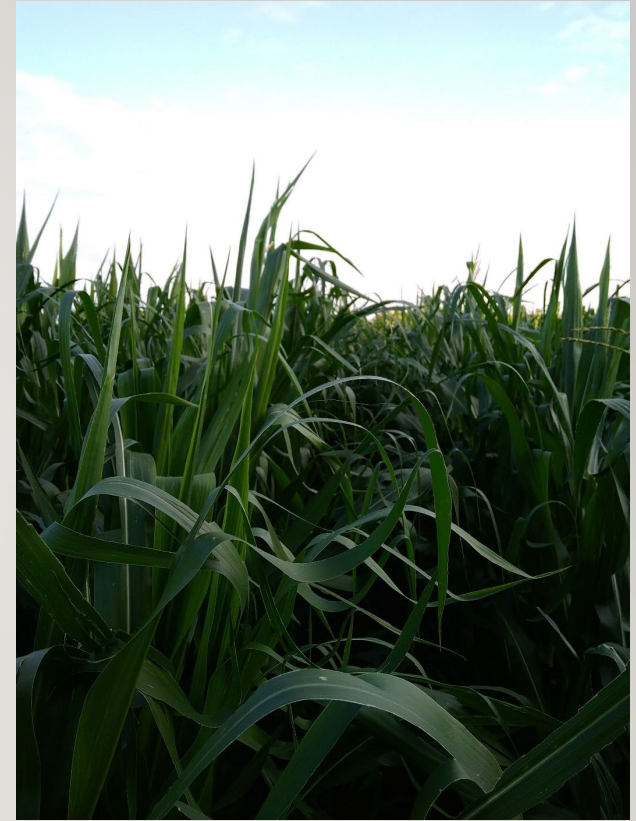




July 1



July 15, 1st tassel



July 20, hail





Frank's planter:

6-row JD I 750 vacuum planter with dry fertilizer

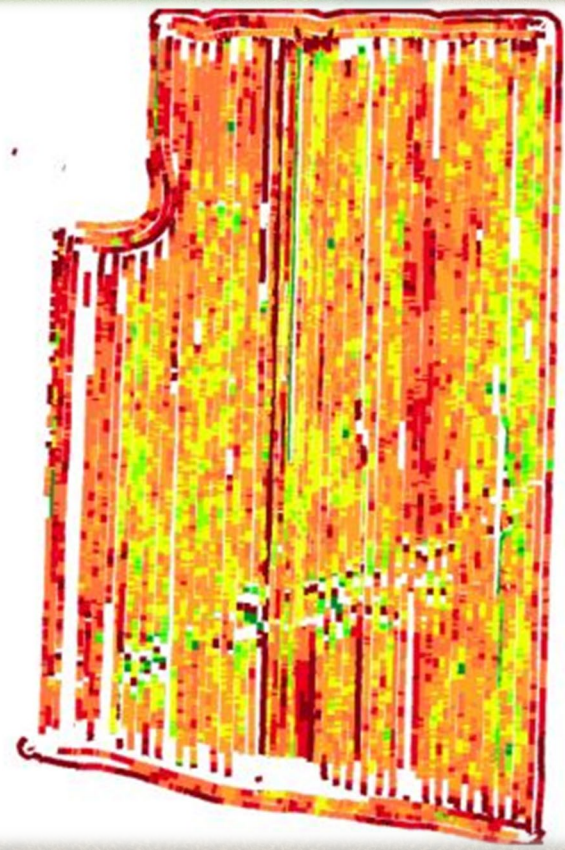
- * Excellent depth control
- * Excellent singulation
- * Excellent population consistency



FIELDVIEW

FRANK 3 • Yield • Avg Yield: 175 bu/ac

FRANK DELORME • FRANK • 2021 Corn • 19.9 ac



bu/ac

> 220

197 - 220

173 - 197

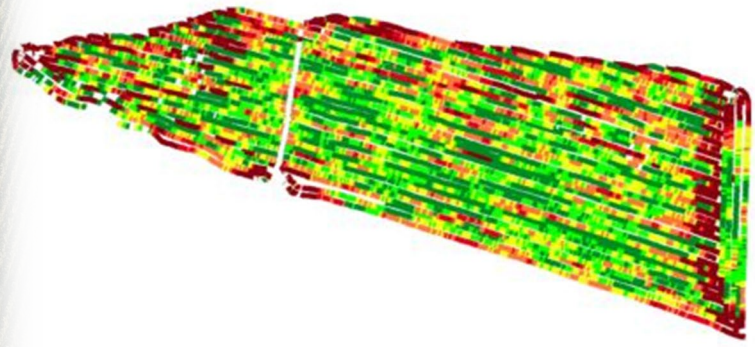
150 - 173

127 - 150

103 - 127

80 - 103

< 80



bu/ac

> 220

200 - 220

180 - 200

160 - 180

140 - 160

< 140



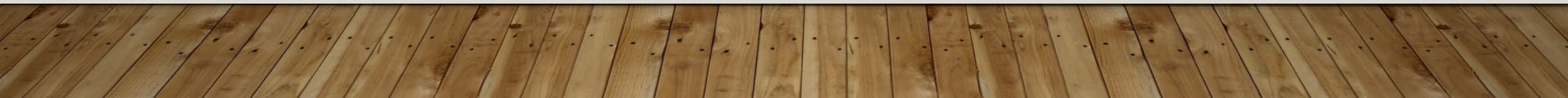


Frank's combine:

**JOHN DEERE 9550 WALKER
6 ROW 693 HEADER**

James' Combine

**JOHN DEERE 9650 STS ROTARY
6ROW 693 HEADER**





VARIETY TRIAL 2021:

- LAST FROST MAY 4TH
- FIRST FROST NOVEMBER 3RD

VARIETY	CHU	Moi st %	Lbs /bu	Dry Yield
DKB 30-63	2325	23.7	55	212
DKB 21-36	2075	24.5	54	202
Pioneer P7417AM	2125	23.4	54	190
DKB 26-40	2150	25.6	56	184
DKB 20-23	2050	24.1	55	169
Pioneer P7211AM	2050	25	53	156
Pioneer P7005AM	2000	22.9	56	141

GRADE LBS/BU MIN: #1 53, #2 51.4, #3 49.7, #4 46.5

VARIETY TRIAL 2020:

- LAST FROST MAY 14TH
- FIRST FROST SEPTEMBER 19TH



GRADE LBS/BU MIN: #1 53, #2 51.4, #3 49.7, #4 46.5

VARIETY	CHU	Moist %	Lbs/ bu	Dry Yield
DKB 26-40	2150	26.7	54	138.2
DKB 24-06	2100	30.5	50	129.5
DKB EXP 7720	2175	28.4	52	129
Pioneer P8352AM	2425	32	48	127.5
Pioneer P7861AM	2250	29.9	50	126.7
DKB 21-36	2075	27.3	52	126.5
DKB 33-78	2400	28	50	120.5
DKB 31-85	2425	32.2	49	119.5
DKB 23-17	2075	27.9	51	119.1
Pioneer P7940AM	2300	29.8	48	118.3

An aerial photograph of a vast agricultural landscape. The foreground and middle ground are dominated by a large field of crops, likely corn, planted in neat, parallel rows. The crops are a mix of green and golden-brown, suggesting they are in the late stages of growth or harvest. To the right, a paved road runs parallel to the field. In the background, there are more fields of varying colors (green and yellow), a small cluster of trees, and a line of forest. The lighting is bright, casting soft shadows across the field.

QUESTIONS?

THANK YOU

